

# *Cats Afghan*

**By Sandra  
Miller  
Maxfield**



From Hooked On Crochet Magazine, No. 66, Page 18, Copyright © 1997 Hooked On Crochet Magazine

**SIZE:** 50½" x 54" not including Fringe.

**STITCHES USED:** Chain, double crochet, slip stitch. See Crochet Basics for stitch illustrations.

**GAUGE:** 3 dc = 1"; 7 dc rows = 4".

**MATERIALS:** \*Worsted-weight yarn — 18 oz. black, 15 oz. each green, purple, red and pink; I crochet hook or size needed to obtain gauge.

\*This project was made using Red Heart® "Jeweltones" by Coats & Clark.

**SKILL LEVEL:** ★★ Average

## INSTRUCTIONS

### AFGHAN

**Row 1:** With black, ch 166, dc in 4th ch from hook, dc in each ch across, turn (164 dc).

**NOTES:** Each square on graph equals 2 dc.

When changing colors always drop yarn to wrong side of work. Use a separate skein or ball of yarn for each color section. **Do not** carry yarn across from one section to another. Fasten off colors at end of each color section.

**Row 2:** Ch 3, dc in next st; \*for **row 2 of graph**, dc in each of next 2 sts changing to green in last st made, dc in next 16 sts changing to purple in last st made, dc in next 12 sts changing to black in last st made, dc in next 30 sts changing to red in last st made, dc in next 16 sts changing to black in last st made, dc in next 4 sts; repeat from \*, dc in each of last 2 sts, turn.

**Rows 3-24:** Ch 3, dc in next st; working across graph 2 times, dc in

each st across changing colors according to graph, dc in each of last 2 sts, turn.

**Rows 25-93:** Repeat rows 2-24 consecutively.

**Row 94:** With black only, ch 3, dc in each st across, fasten off.

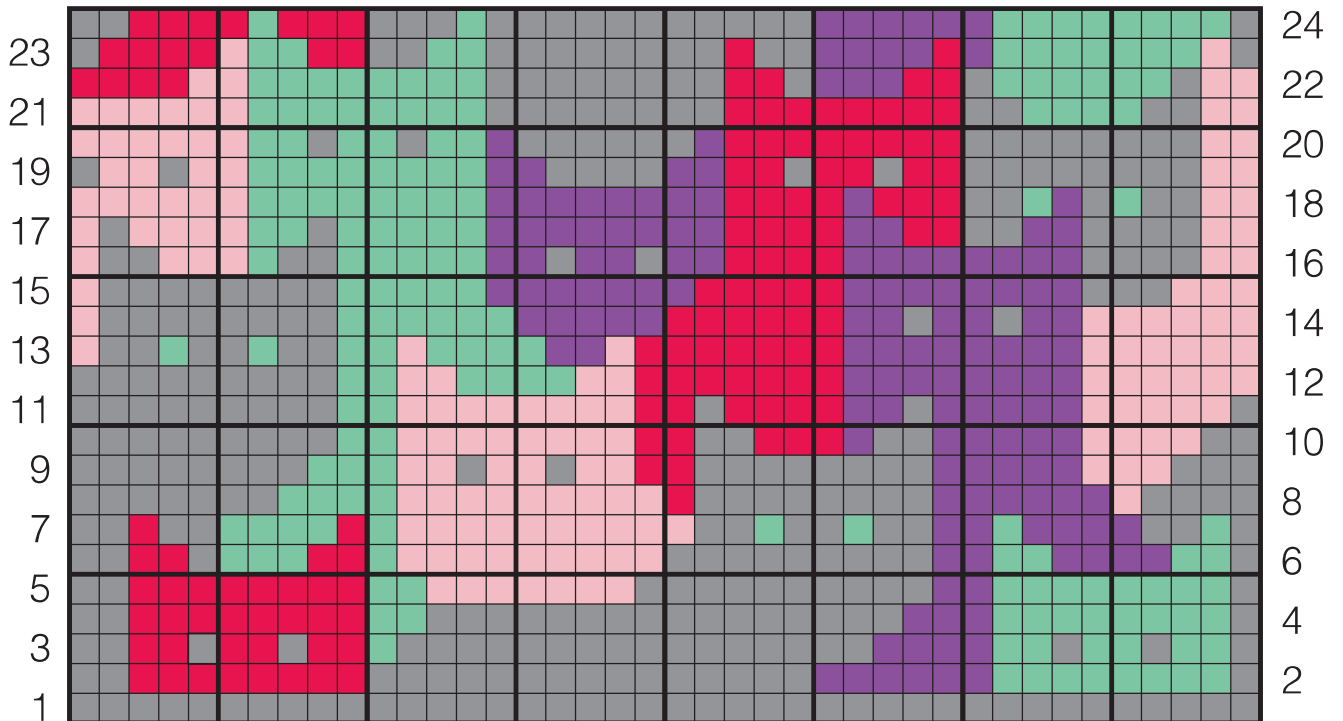
### FRINGE

For **each Fringe**, cut 4 strands black each 21" long. With all 4 strands held together, fold in half, insert hook in st, draw fold through st, draw all loose ends through fold, tighten. Trim.






Fringe in every other st on each short end of Afghan.♥

## "CATS AFGHAN" COLOR CHANGE GRAPH

### COLOR CHANGE GRAPH



Each square on graph = 2 dc.

- |  |   |
|--|---|
|  = Black  |  = Pink  |
|  = Purple |  = Green |
|  = Red    |   |